

## ART and SCIENCE

Visual representations of plants are shown in different ways, for different purposes. In field guides, botanists tend to prefer line drawings over an actual photo of a plant. The line drawing is preferred because an exemplar can be drawn, with details that might not be visible in a photo. While nothing captures the true dynamics of a plant better than the living plant itself, a photo can capture one moment in the plant's life. Another way of capturing a likeness of a plant is through the use of nature prints. In a nature print, a part of the plant, such as the leaf, is actually printed, with the other parts, like the flower, drawn in. Often nature prints are then given color, such as the water colors in the Nourse Sketchbook, a sketchbook done by the Nourse Family between the years of 1841-1846. The sketchbook is housed in the Library of Virginia's Special Collections. Yet another method is a preserved plant specimen in a herbarium. An example of this would be the preserved Virginia plant specimens of John Clayton, which are currently housed in a herbarium of his work in London's Museum of Natural History.

Following are samples of all four methods- line drawings, photographs, nature prints and photos taken of preserved plant specimens. Most of the line drawings come from The English Herbal, a beautifully preserved book published in 1710, and which is housed in the Library of Virginia's Special Collections. Nature prints are taken from the the Nourse Sketchbook, and Clayton's specimens are used as they were available. These can be studied for comparison, and enjoyed for their beauty.

### INDEX of PLANT REPRESENTATIONS:

**Birdweed** (*Polygonum aviculare*)- John Clayton Specimen #382

**Birdweed** (*Polygonum aviculare*)- Nourse Sketchbook Painted Nature print

**Birdweed** (*Polygonum aviculare*)- photograph

**Birdweed** (*Polygonum aviculare*)- Salmon's Herbal line drawing

**Milkweed** (*Asclepias tuberosa*)-John Clayton Specimen #83  
**Milkweed** (*Asclepias tuberosa*)- Nourse Sketchbook Painted Nature print  
**Milkweed** (*Asclepias tuberosa*)- photograph  
**Milkweed** (*Asclepias tuberosa*)- Salmon's Herbal line drawing

**Thorn-apple** (*Datura stramonium*)- Berlin University Herbarium Specimen  
**Thorn-apple** (*Datura stramonium*)-Nourse Sketchbook Painted Nature print  
**Thorn-apple** (*Datura stramonium*)-photograph  
**Thorn-apple** (*Datura stramonium*)- Salmon's Herbal line drawing

**Snapdragon** (*Antirrhinum majus*)-Herbarium specimen  
**Snapdragon** (*Antirrhinum majus*)-Nourse Sketchbook Painted Nature print  
**Snapdragon** (*Antirrhinum majus*)- photograph  
**Snapdragon** (*Antirrhinum majus*)- Salmon's Herbal line drawing

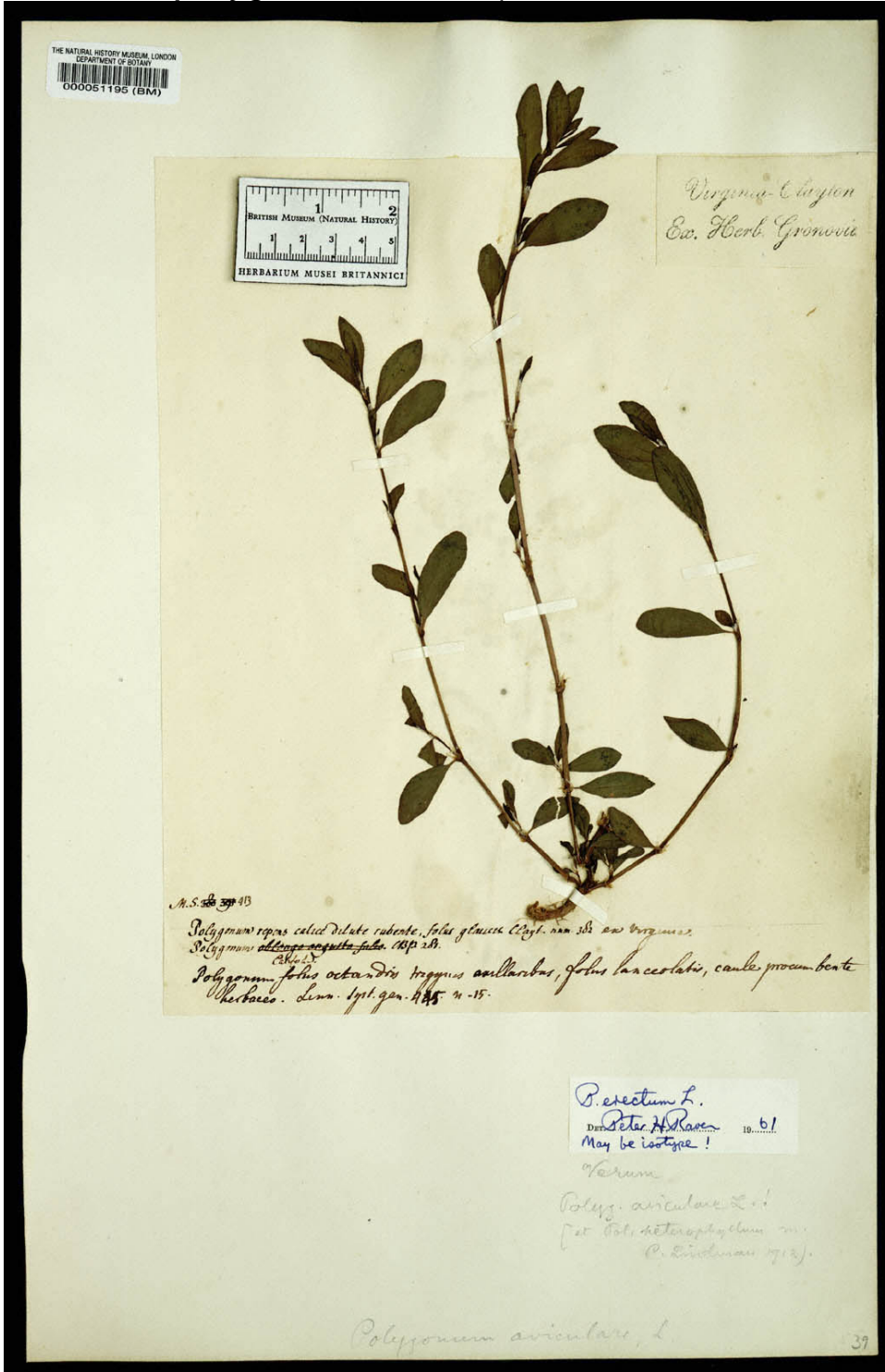
**Wild Geranium** (*Geranium maculatum*)-Herbarium Specimen  
**Wild Geranium**(*Geranium maculatum*)-Nourse Sketchbook Painted Nature print  
**Wild Geranium** (*Geranium maculatum*)-photograph  
**Wild Geranium** (*Geranium maculatum*)- line drawing

**Thyme** (*Thymus vulgaris*)-Herbarium Specimen  
**Thyme** (*Thymus vulgaris*)- Nourse Sketchbook Painted Nature print  
**Thyme** (*Thymus vulgaris*)-photograph  
**Thyme** (*Thymus vulgaris*)- Salmon's Herbal line drawing

**Cat Mint** (*Nepeta cataria*)- John Clayton Specimen # 437  
**Cat Mint** (*Nepeta cataria*)- Nourse Sketchbook Painted Nature print  
**Cat Mint** (*Nepeta cataria*)-photograph  
**Cat Mint** (*Nepeta cataria*)- line drawing

**Virginia Thistle** (*Cirsium Virginianum*)- John Clayton Specimen # 193  
**Virginia Thistle** (*Cirsium Virginianum*)- Nourse Sketchbook Painted Nature print  
**Virginia Thistle** (*Cirsium Virginianum*)- photograph  
**Virginia Thistle** (*Cirsium Virginianum*)- Salmon's Herbal line drawing

**Birdweed (*Polygonum aviculare*)**



2012 The Natural History Museum, John Clayton Herbarium, Clayton #382

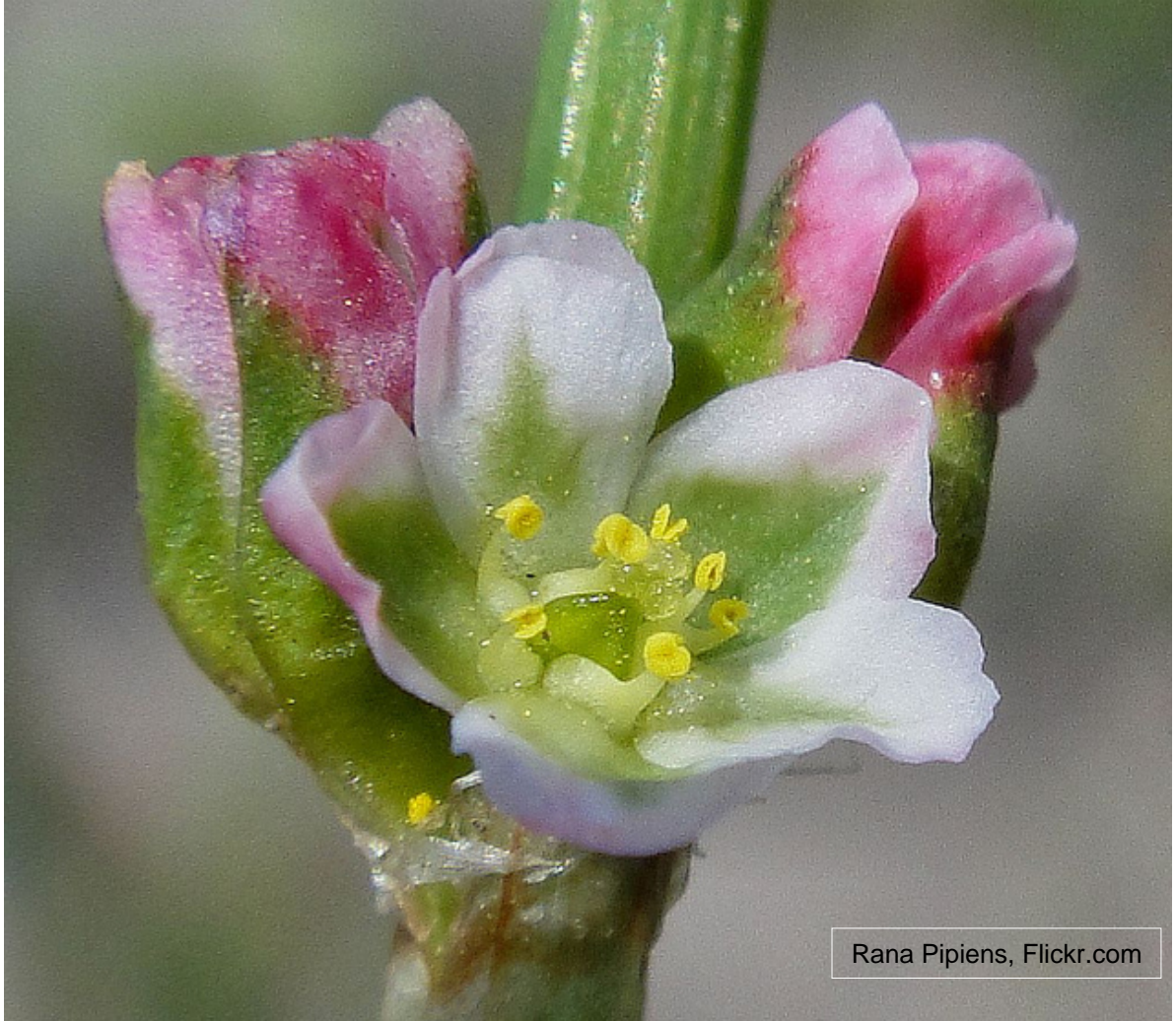
**Birdweed (*Polygonum aviculare*)**



Nourse Sketchbook from the The Highlands,  
1841-1846, Library of Virginia Special Collections

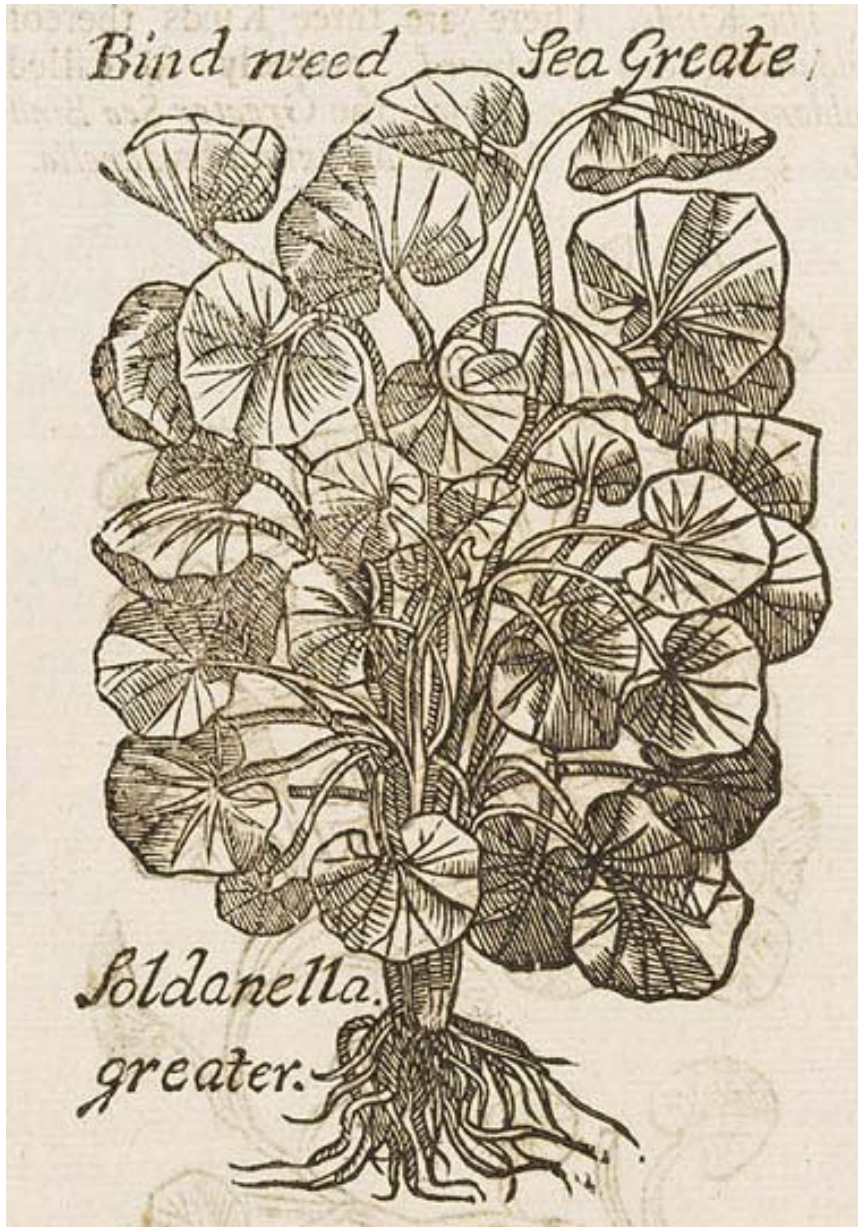


**Birdweed** (*Polygonum aviculare*)



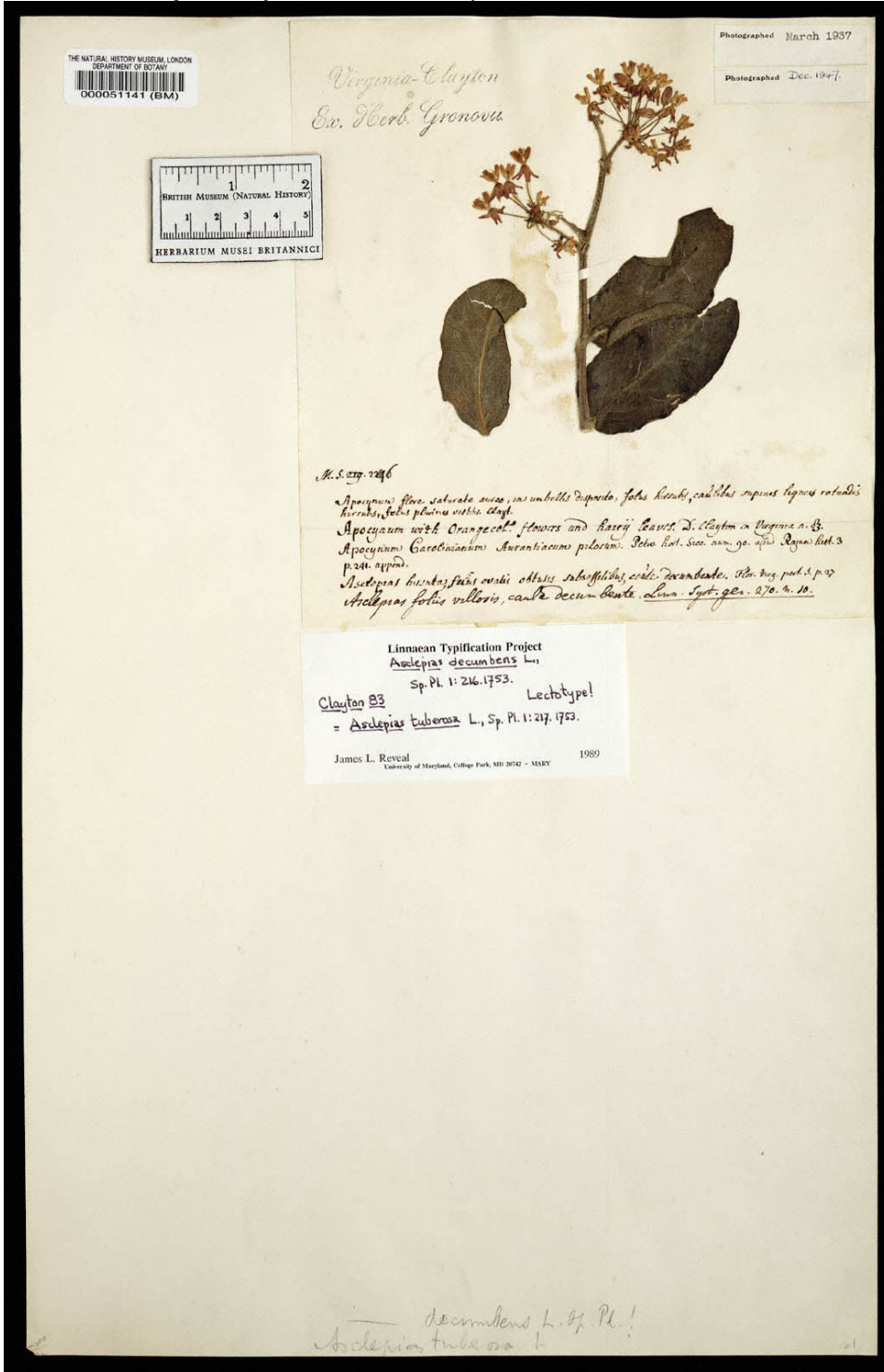
Rana Pipiens, Flickr.com

**Birdweed (*Polygonum aviculare*)**





**Milkweed (*Asclepias tuberosa*)**



2012 The Natural History Museum, John Clayton Herbarium, Clayton #83

**Milkweed (*Asclepias tuberosa*)**



Nourse Sketchbook from the The Highlands,  
1841-1846, Library of Virginia Special Collections



**Milkweed** (*Asclepias tuberosa*)



Flowersociety.com

**Milkweed (*Asclepias tuberosa*)**



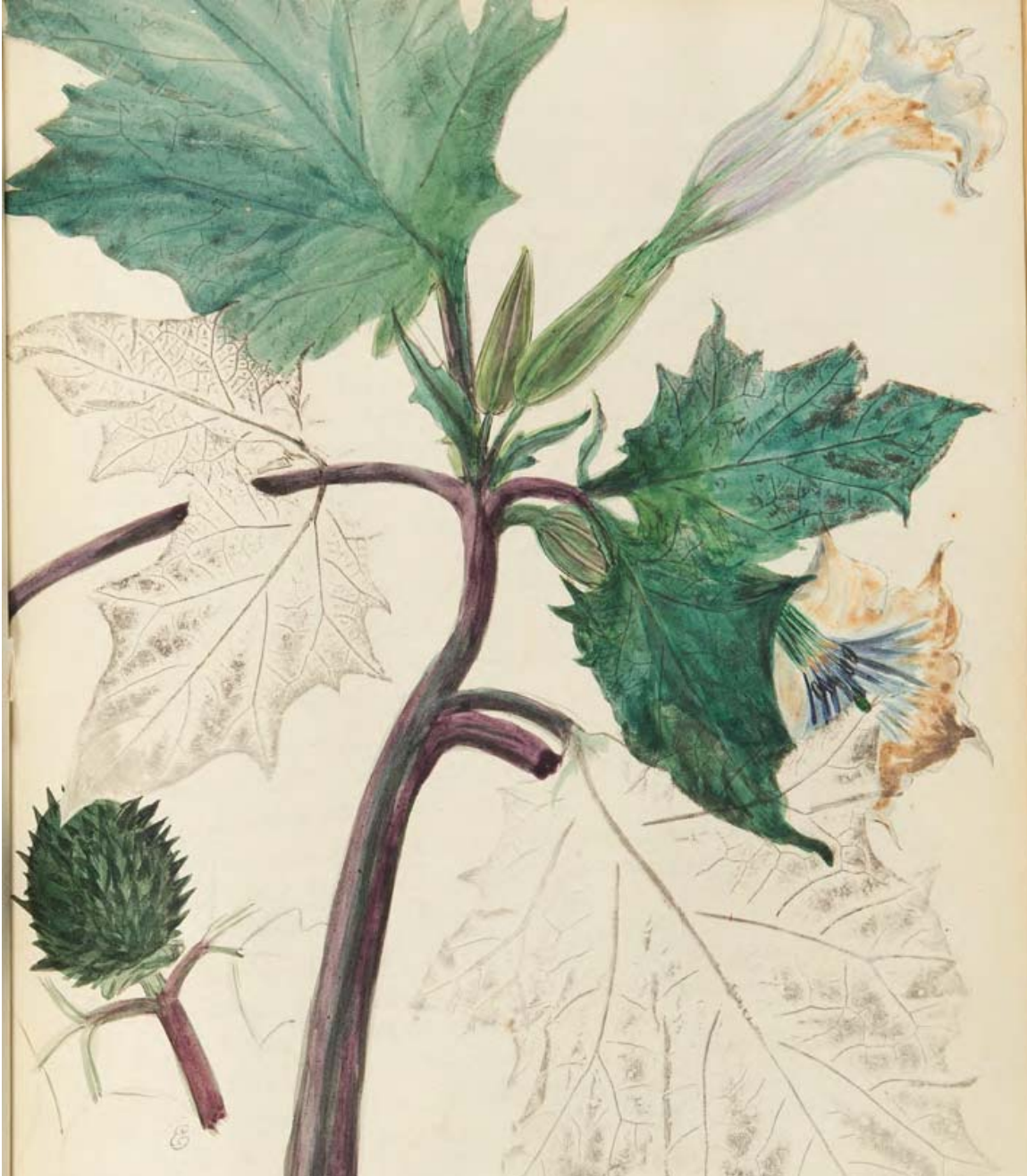
## Thorn-apple (*Datura stramonium*)



© Botanic Garden and Botanical Museum Berlin-Dahlem, Freie Universität Berlin  
[ww2.bgbm.org/herbarium/Access.cfm](http://ww2.bgbm.org/herbarium/Access.cfm)



**Thorn-apple (*Datura stramonium*)**



Nourse Sketchbook from the The Highlands,  
1841-1846, Library of Virginia Special Collections

**Thorn-apple (*Datura stramonium*)**



**Thorn-apple (*Datura stramonium*)**





**Snapdragon (*Antirrhinum majus*)-**



herbariaunited.org

**Snapdragon (*Antirrhinum majus*)-**



Nourse Sketchbook from the The Highlands,  
1841-1846, Library of Virginia Special Collections

**Snapdragon** (*Antirrhinum majus*)-



Digthedirt.com



**Snapdragon** (*Antirrhinum majus*)-



**Wild Geranium** (*Geranium maculatum*)

#785

*Geranium maculatum*  
Wild Geranium  
11" X 14"



**Wild Geranium** (*Geranium maculatum*)



Nourse Sketchbook from the The Highlands,  
1841-1846, Library of Virginia Special Collections



**Wild Geranium** (*Geranium maculatum*)



© W J Hayden

**Wild Geranium** (*Geranium maculatum*)



**Geranium maculatum L**

[brianaltonenmph.com](http://brianaltonenmph.com)

**Thyme** (*Thymus vulgaris*)

#469

*Thymus vulgaris argenteus*

Thyme

11" X 17"



Erika Sonder's Portable **Herbarium** Plant Catalog - T-Z  
portableherbarium.com



**Thyme** (*Thymus vulgaris*)



Nourse Sketchbook from the The Highlands,  
1841-1846, Library of Virginia Special Collections

**Thyme** (*Thymus vulgaris*)



Florafinder.com



**Thyme** (*Thymus vulgaris*)





**Cat Mint (*Nepeta cataria*)**



2012 The Natural History Museum, John Clayton Herbarium, Clayton #437

**Cat Mint (*Nepeta cataria*)**



Nourse Sketchbook from the The Highlands,  
1841-1846, Library of Virginia Special Collections



**Cat Mint (*Nepeta cataria*)**



Bethsbackyard.com



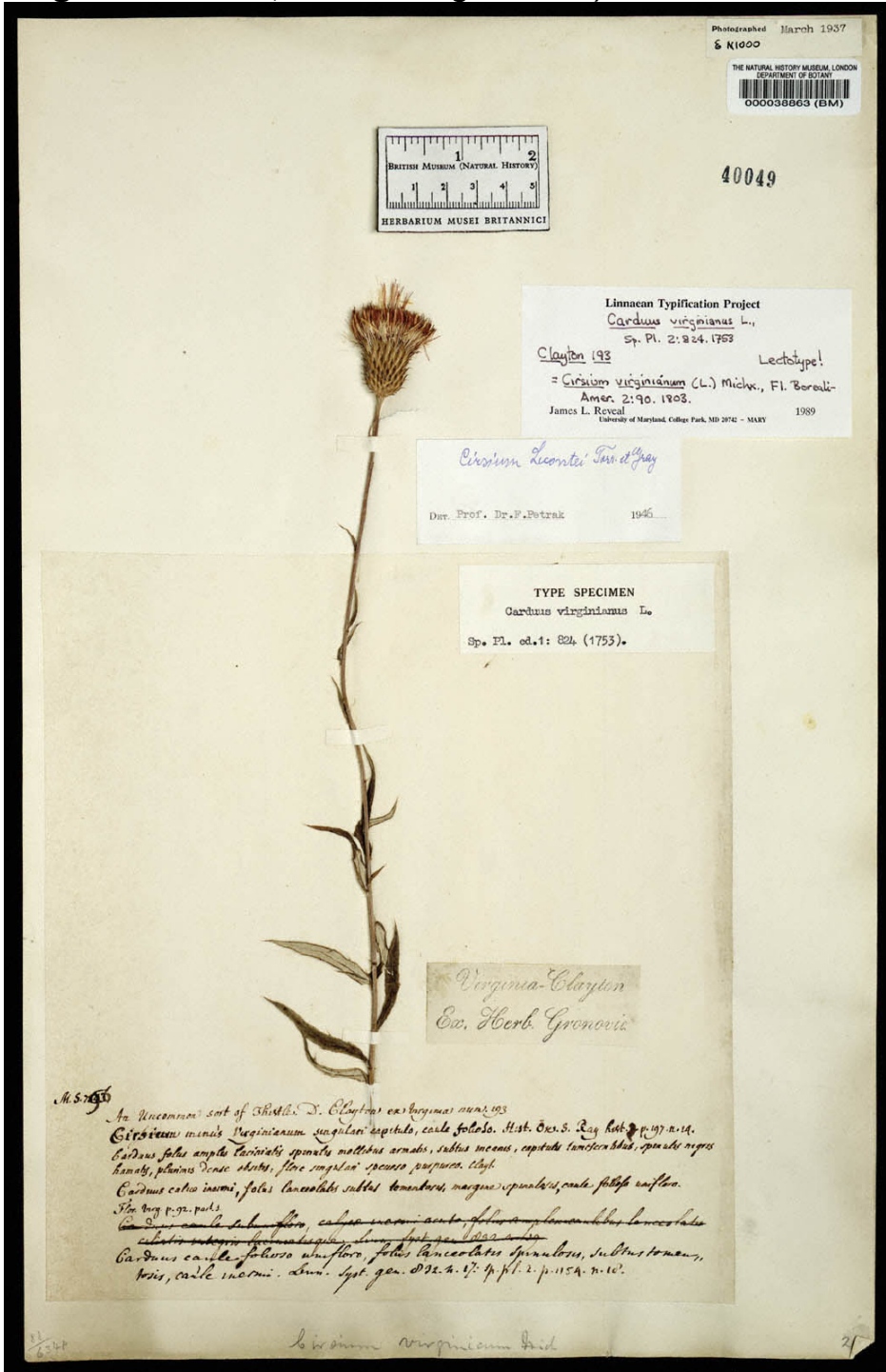
**Cat Mint (*Nepeta cataria*)**



ΚΑΤΤΜΥΝΤΑ, *NEPETA CATARIA* L.

[http://commons.wikimedia.org/wiki/File:92\\_Nepeta\\_cataria.jpg](http://commons.wikimedia.org/wiki/File:92_Nepeta_cataria.jpg)

Virginia Thistle (*Cirsium Virginianum*)



2012 The Natural History Museum, John Clayton Herbarium, Clayton #193

**Virginia Thistle** (*Cirsium Virginianum*)



Nourse Sketchbook from the The Highlands,  
1841-1846, Library of Virginia Special Collections

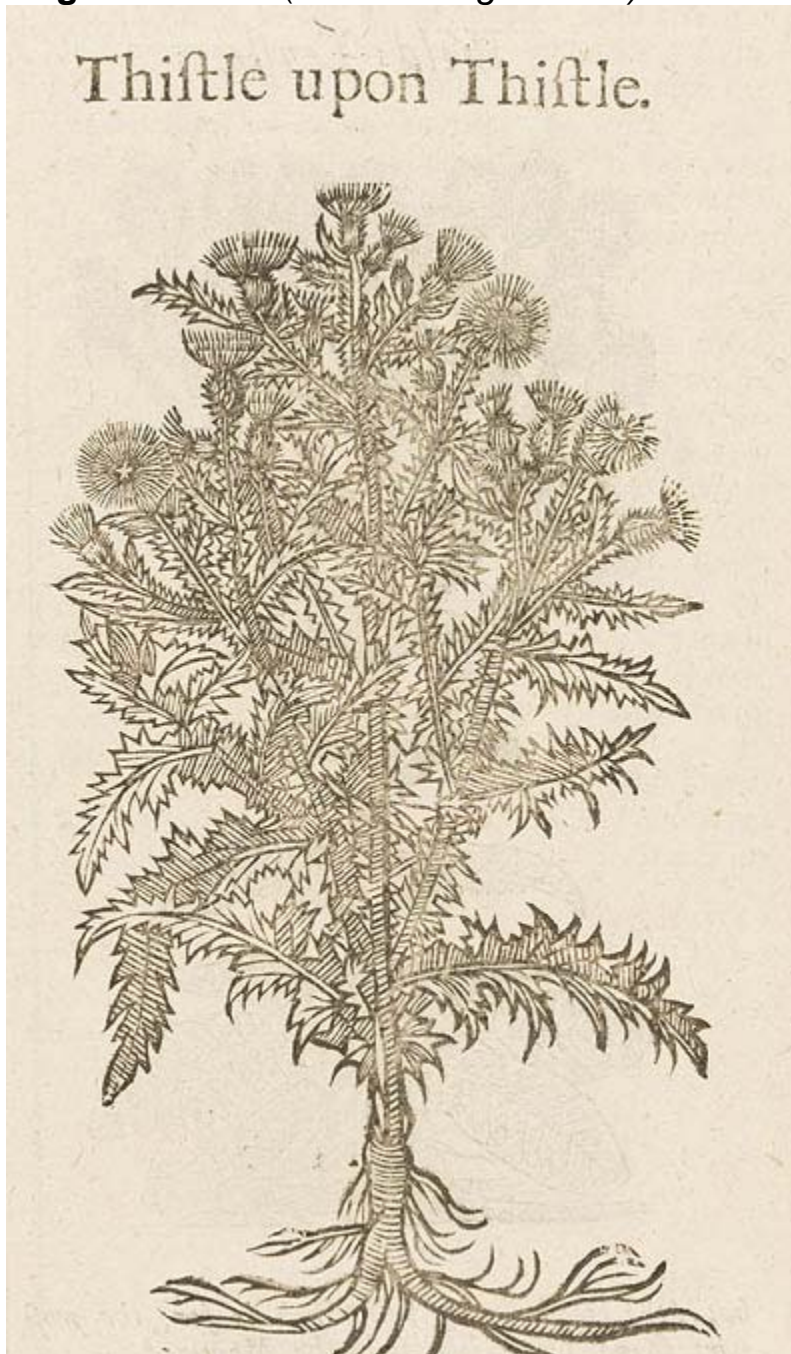


**Virginia Thistle** (*Cirsium Virginianum*)



Imagejuicy.com

**Virginia Thistle** (*Cirsium Virginianum*)



## Works cited

Gerard, John, Thomas Johnson, John Payne and Rembert Dodoens. *The herball or Generall historie of plantes. Gathered by Iohn Gerarde of London Master in Chirurgerie very much enlarged and amended by Thomas Iohnson citizen and apothecarye of London.* London: Printed by Adam Islip Ioice Norton and Richard Whitakers, 1633.

Nhm.ac.uk. "*The Clayton Herbarium: Homepage - Botany Dept (BM), NHM, London.*" 1993. <http://www.nhm.ac.uk/research-curation/research/projects/clayton-herbarium/> (accessed 11 Jul 2013).

Nourse family sketchbook of the highlands. 1841-1846. Library of Virginia Special Collections